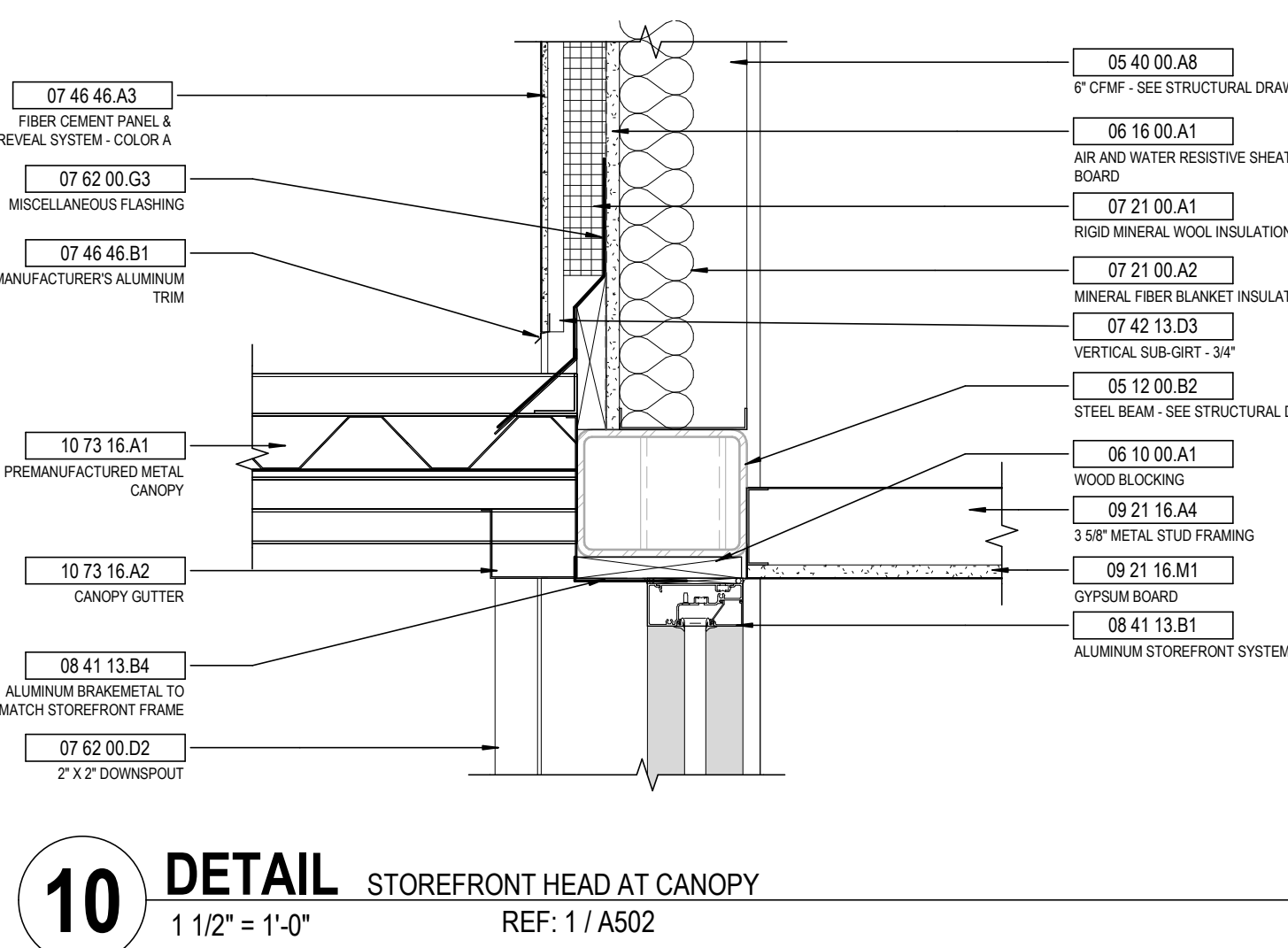
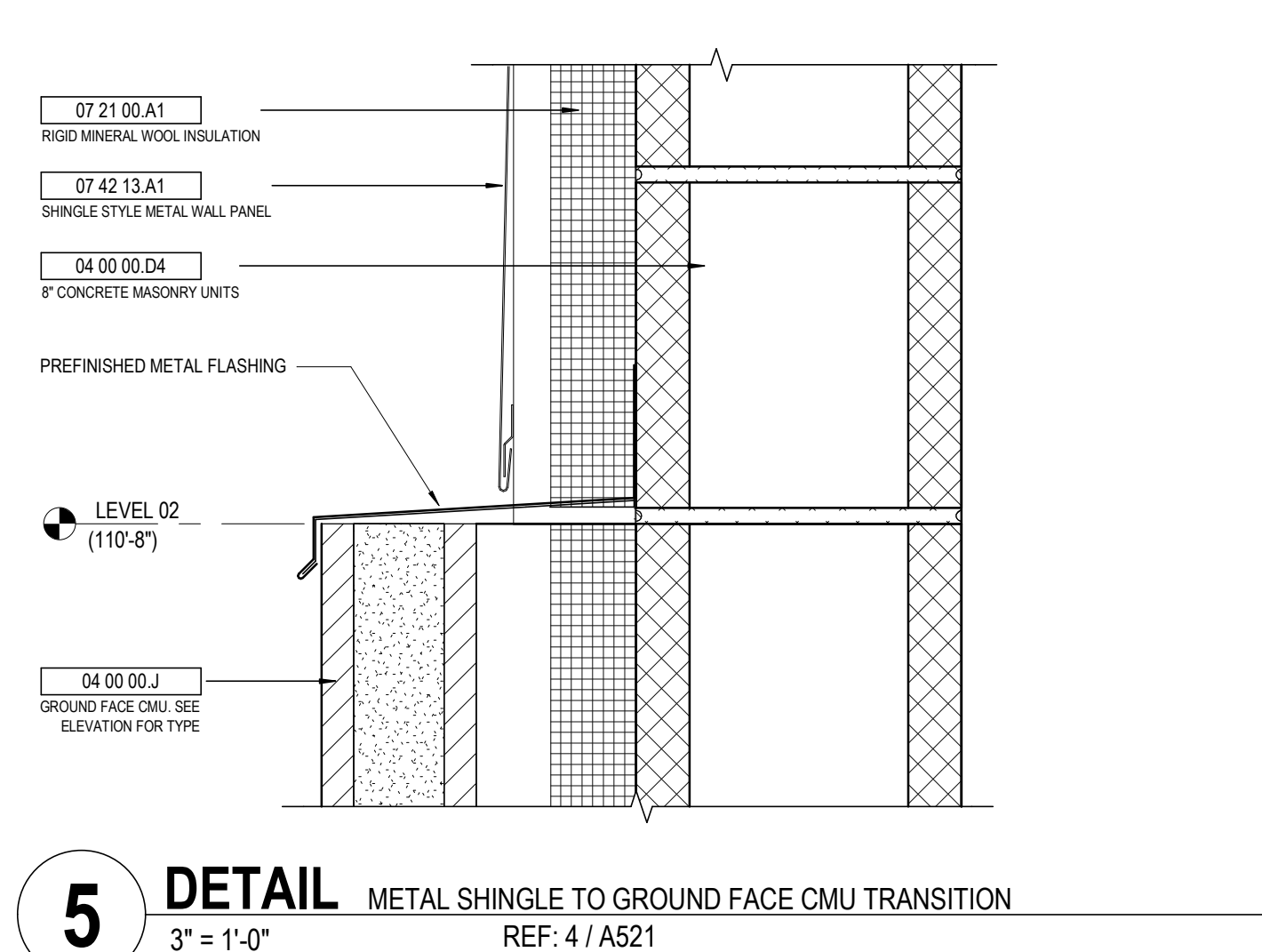




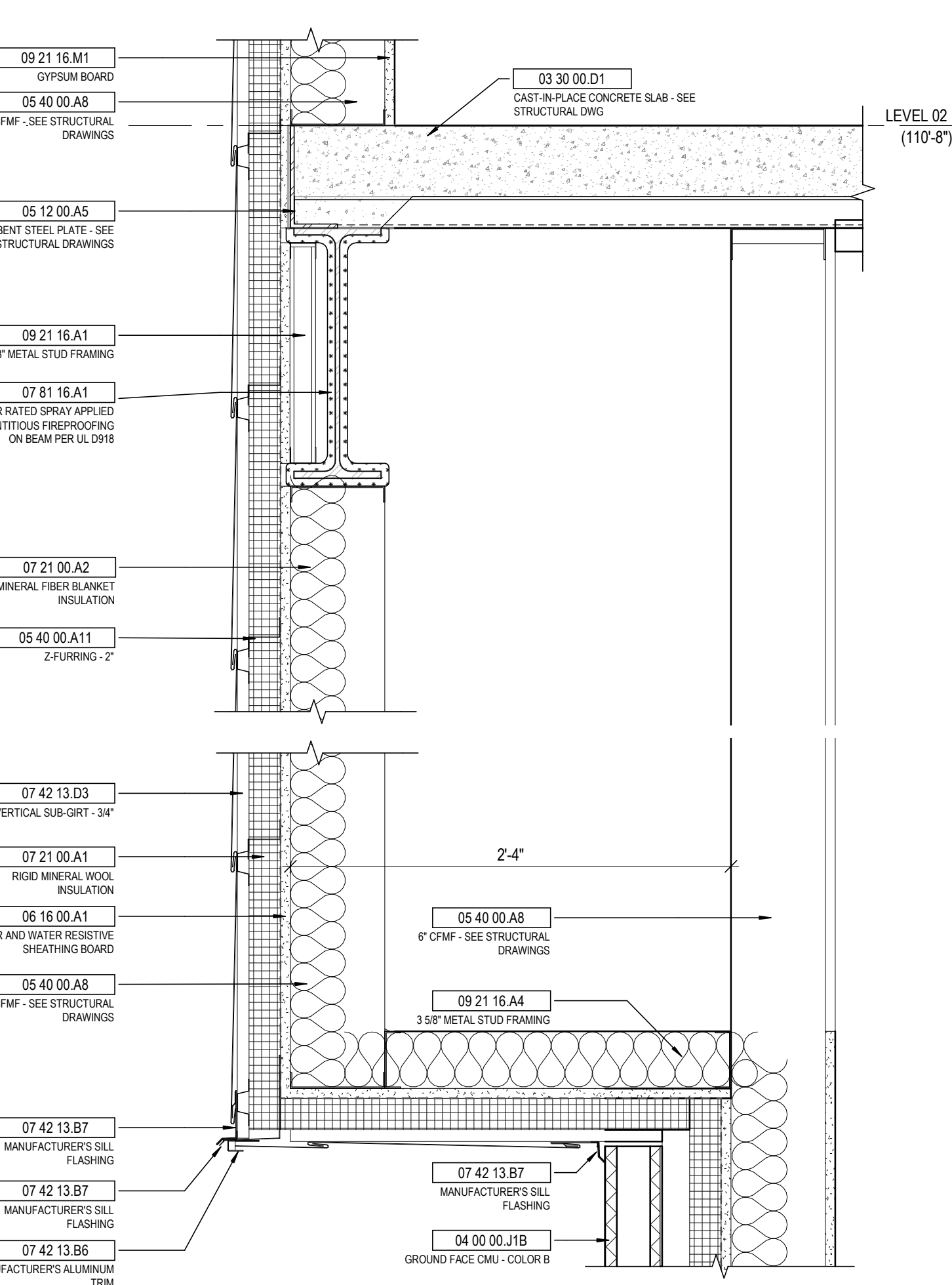
13 DETAIL HEAD AT EAST SOFFIT
1 1/2" = 1'-0" REF: 3 / A501



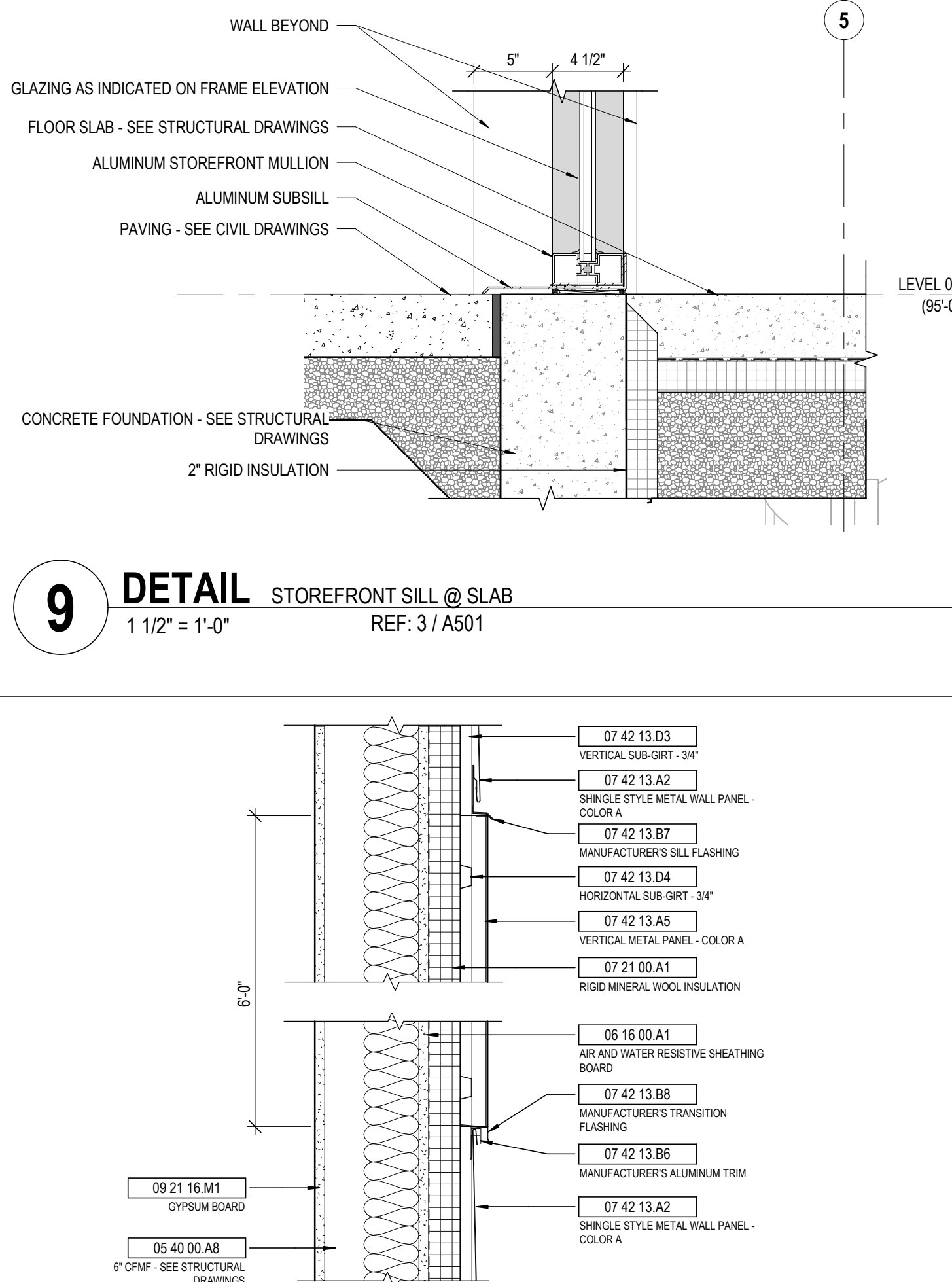
10 DETAIL STOREFRONT HEAD AT CANOPY
1 1/2" = 1'-0" REF: 1 / A502



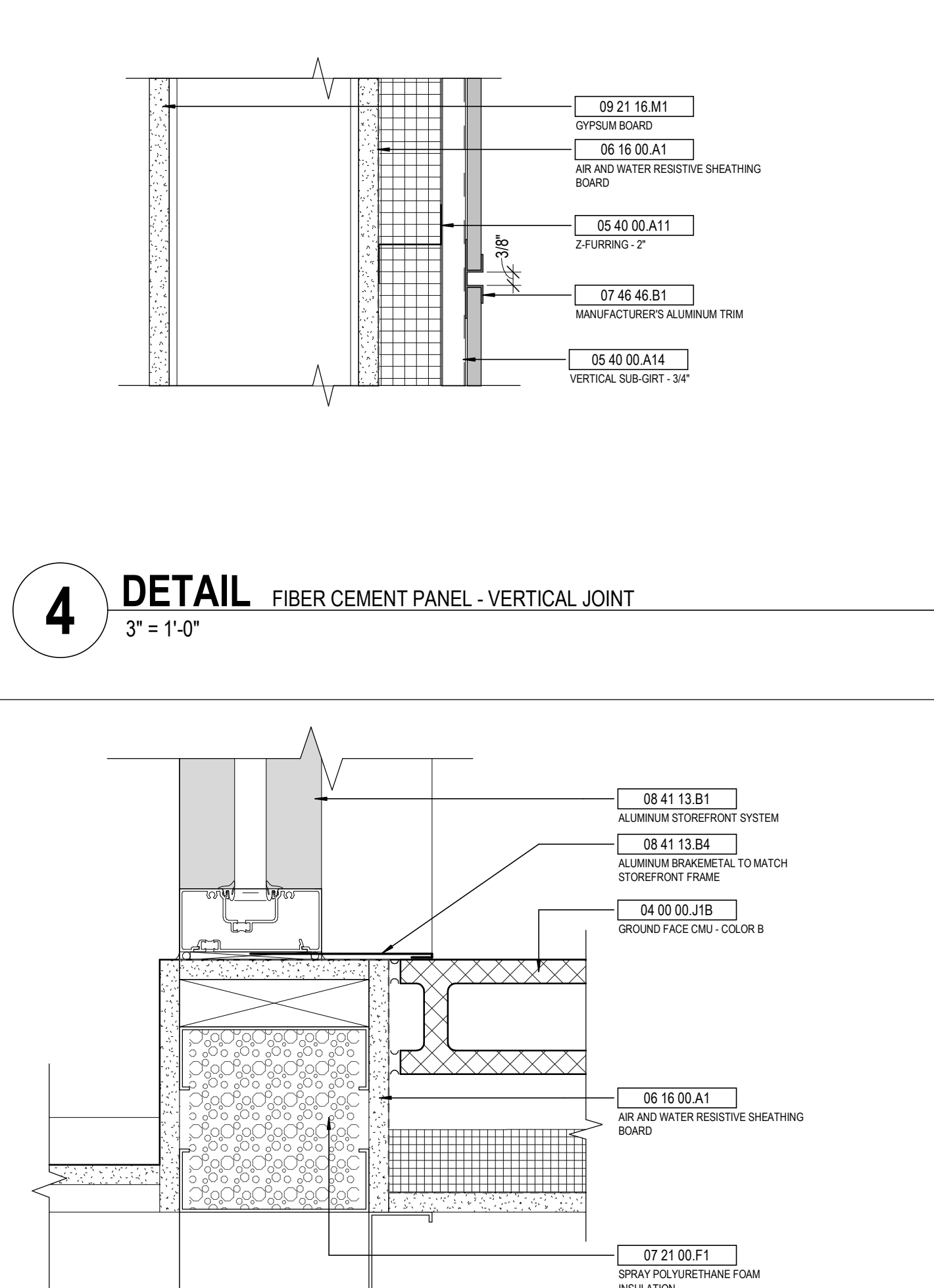
5 DETAIL METAL SHINGLE TO GROUND FACE CMU TRANSITION
3" = 1'-0" REF: 4 / A521



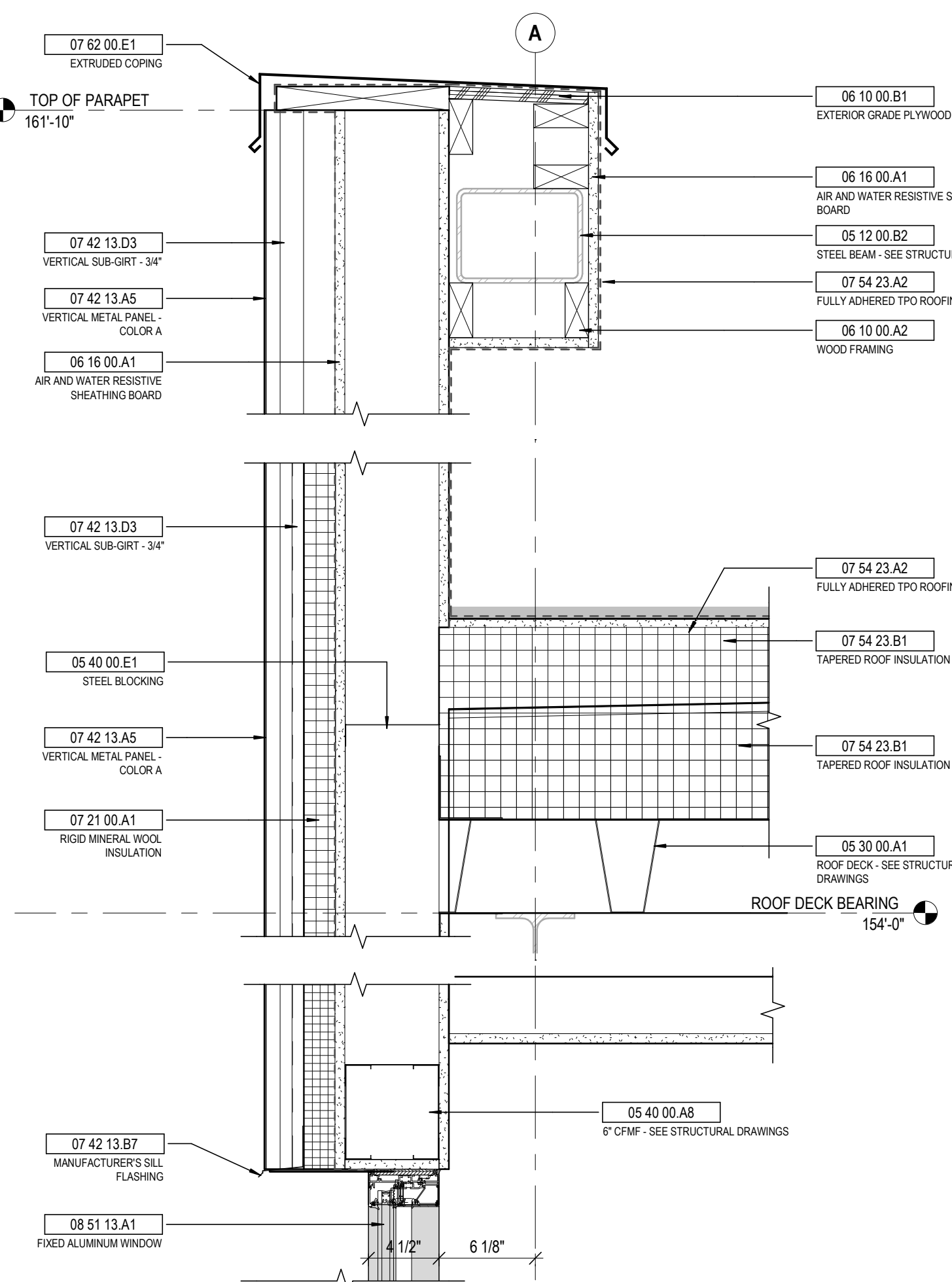
12 DETAIL EXTERIOR SOFFIT - EAST
1 1/2" = 1'-0" REF: 5 / A501



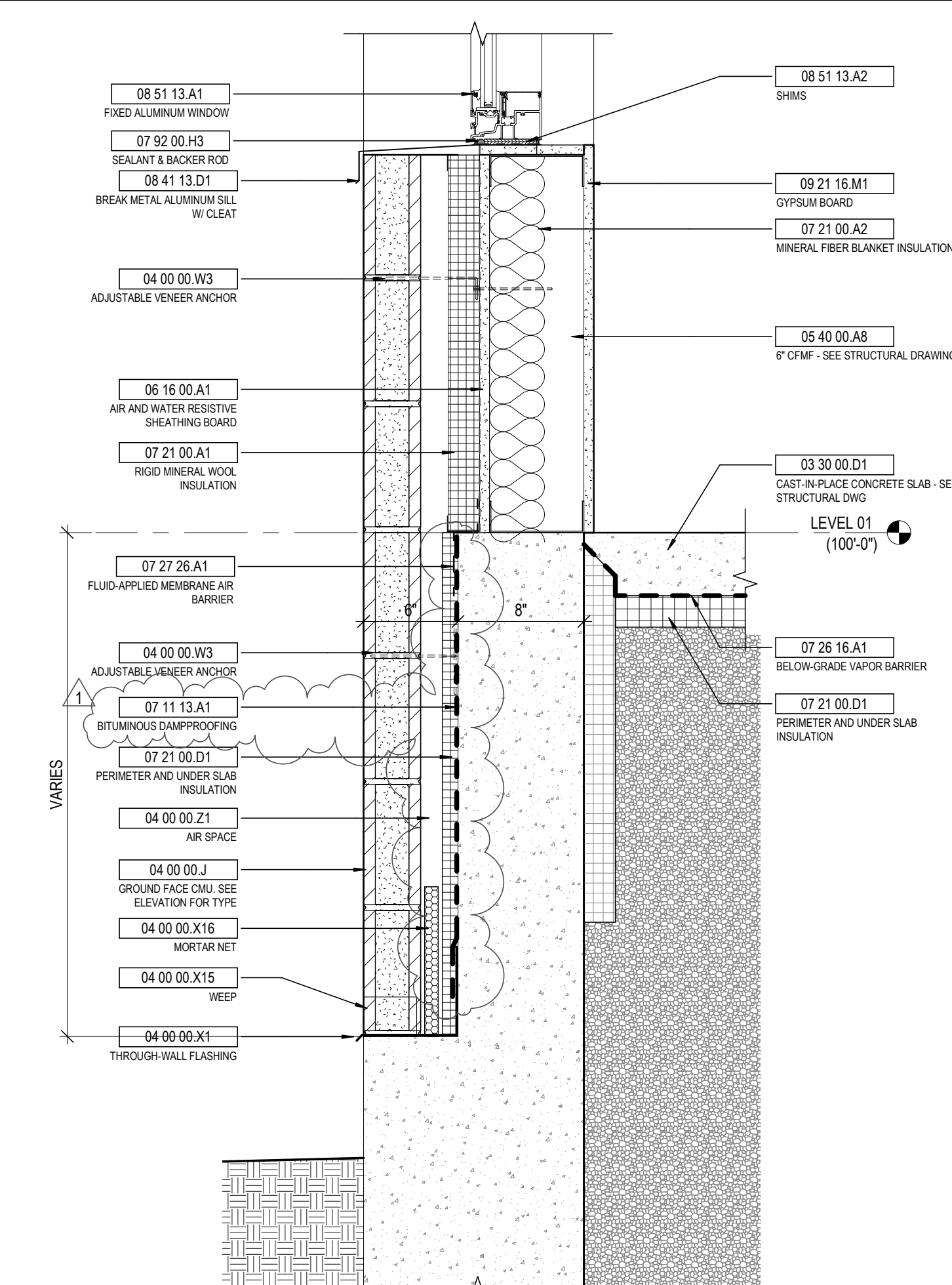
9 DETAIL STOREFRONT SILL @ SLAB
1 1/2" = 1'-0" REF: 3 / A501



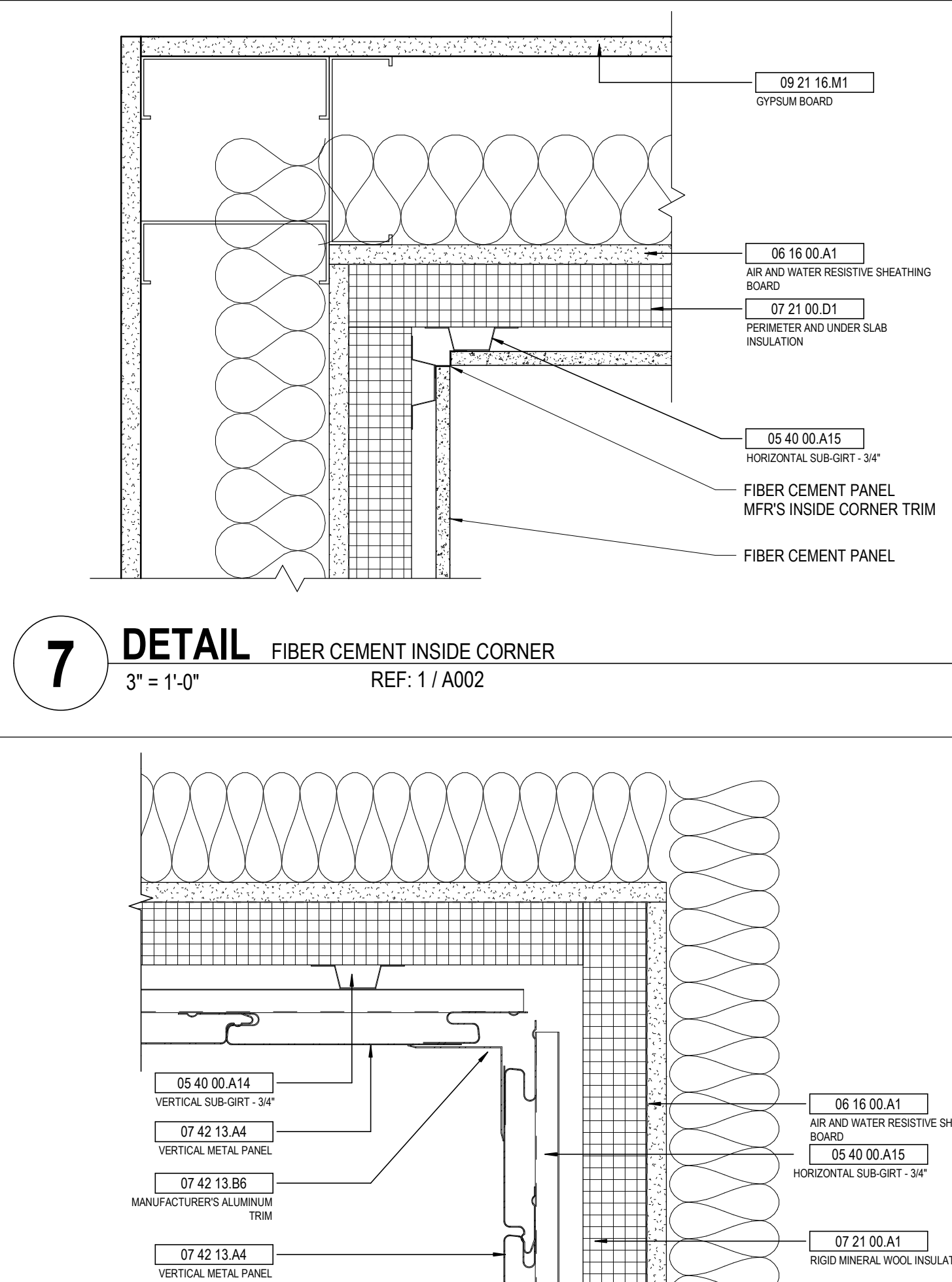
4 DETAIL FIBER CEMENT PANEL - VERTICAL JOINT
3" = 1'-0"



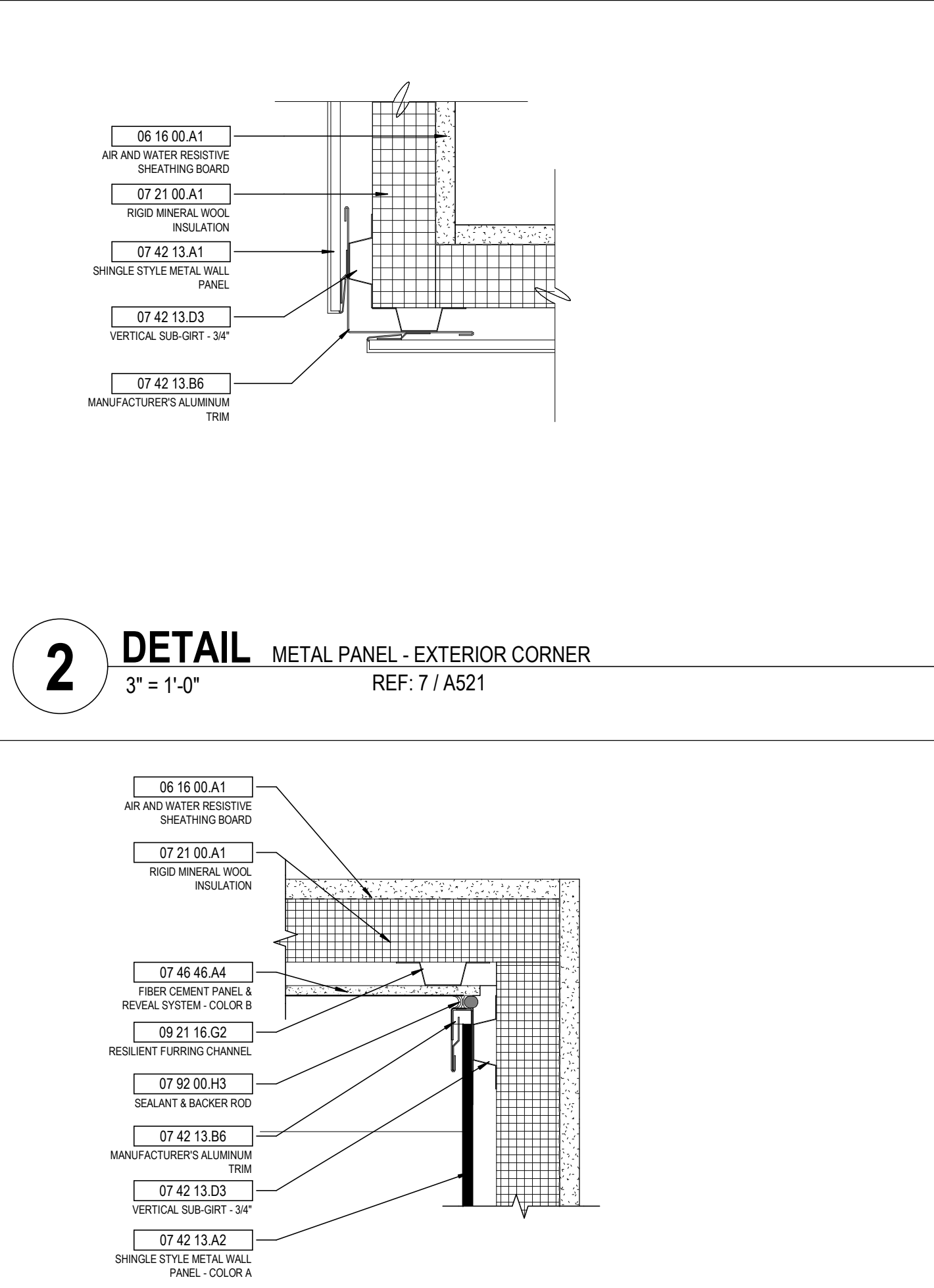
15 DETAIL PARAPET AT NORTHEAST CORNER
1 1/2" = 1'-0" REF: 4 / A501



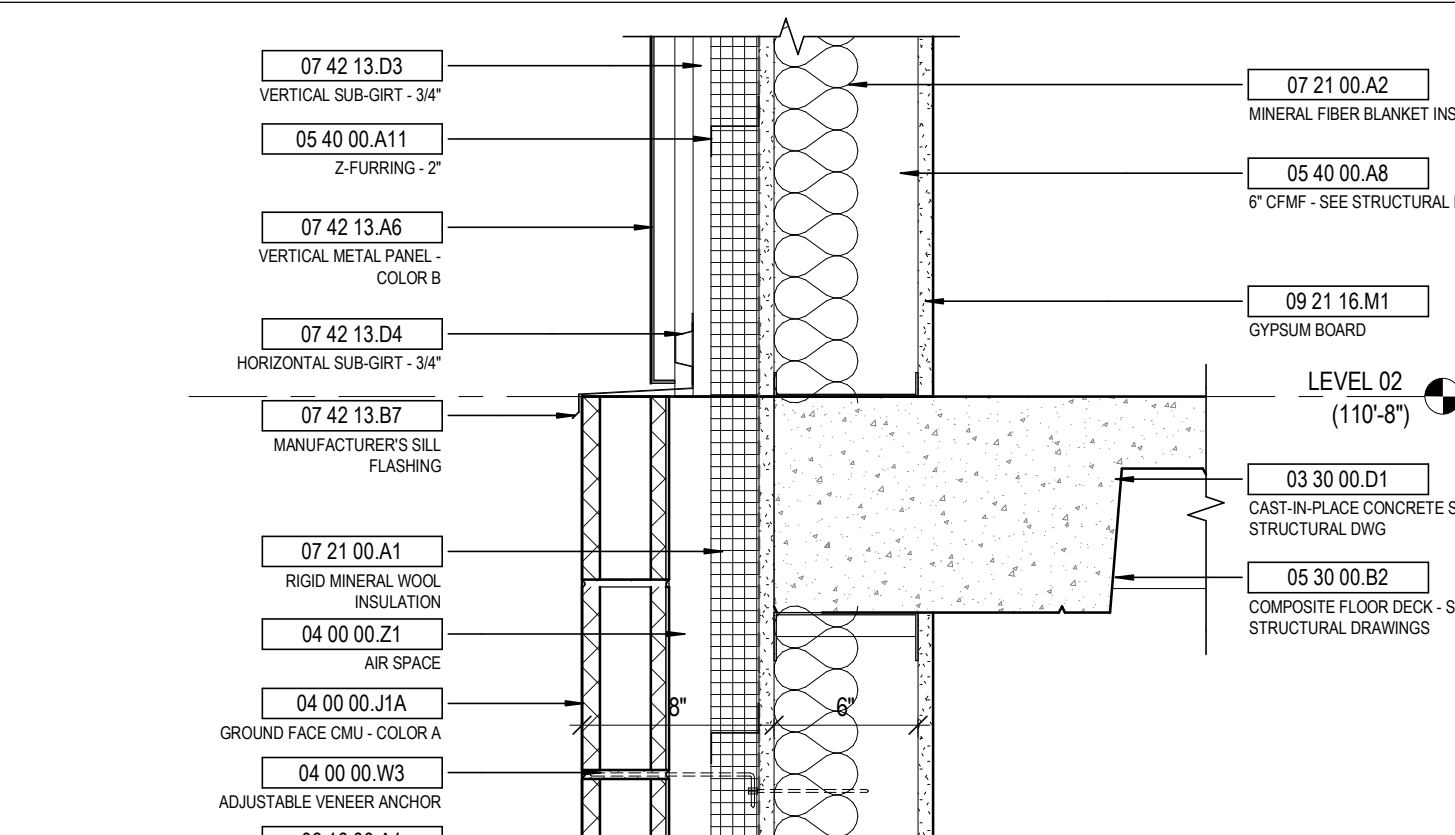
11 DETAIL TYP. FOUNDATION AT NORTH WALL
1 1/2" = 1'-0" REF: 4 / A502



7 DETAIL FIBER CEMENT INSIDE CORNER
3" = 1'-0" REF: 1 / A502



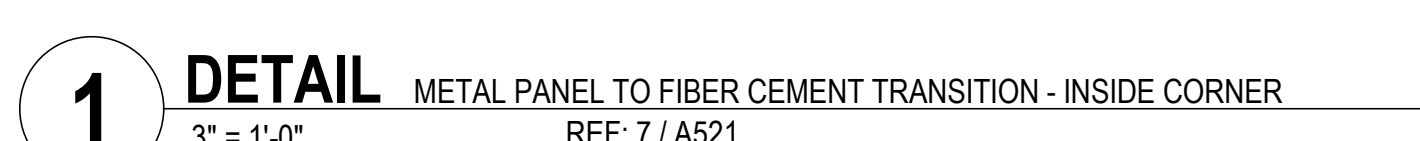
2 DETAIL METAL PANEL - EXTERIOR CORNER
3" = 1'-0" REF: 7 / A521



14 DETAIL VERTICAL PANEL TO CMU TRANSITION
1 1/2" = 1'-0" REF: 4 / A502



6 DETAIL VERTICAL METAL PANEL - INSIDE CORNER
3" = 1'-0"



1 DETAIL METAL PANEL TO FIBER CEMENT TRANSITION - INSIDE CORNER
3" = 1'-0" REF: 7 / A521

STATE OF KENTUCKY APPROVAL

KEYNOTE LEGEND

KEY VALUE	KEYNOTE TEXT
03 30 00 D1	CAST-IN-PLACE CONCRETE SLAB - SEE STRUCTURAL DWG
04 00 00 D4	8\"
04 00 00 J	GROUND FACE CMU - SEE ELEVATION FOR TYPE
04 00 00 J1A	GROUND FACE CMU - COLOR A
04 00 00 J1B	GROUND FACE CMU - COLOR B
04 00 00 W3	ADJUSTABLE VENER ANCHOR
04 00 00 X1	THROUGH-WALL FLASHING
04 00 00 X15	WEEP
04 00 00 X16	MORTAR NET
04 00 00 Z1	AIR SPACE
05 12 00 A5	BENT STEEL PLATE - SEE STRUCTURAL DRAWINGS
05 12 00 B2	STEEL BEAM - SEE STRUCTURAL DWG
05 30 00 A1	ROOF DECK - SEE STRUCTURAL DRAWINGS
05 30 00 B2	COMPOSITE FLOOR DECK - SEE STRUCTURAL DRAWINGS
05 40 00 A8	6\"
05 40 00 A11	Z-FURRING - 2\"
05 40 00 A14	VERTICAL SUB-GIRT - 3/4\"
05 40 00 A15	HORIZONTAL SUB-GIRT - 3/4\"
05 40 00 E1	STEEL BLOCKING
06 10 00 A1	WOOD BLOCKING
06 10 00 A2	WOOD FRAMING
06 10 00 B1	EXTERIOR GRADE PLYWOOD
06 16 00 A1	AIR AND WATER RESISTIVE SHEATHING BOARD
07 11 13 A1	BITUMINOUS DAMPPROOFING
07 21 00 A1	RIGID MINERAL WOOL INSULATION
07 21 00 A2	MINERAL FIBER BLANKET INSULATION
07 21 00 D1	PERIMETER AND UNDER SLAB INSULATION
07 21 00 F1	SPRAY POLYURETHANE FOAM INSULATION
07 26 16 A1	BELOW-GRADE VAPOR BARRIER
07 27 26 A1	FLUID-APPLIED MEMBRANE AIR BARRIER
07 42 13 A1	SHINGLE STYLE METAL WALL PANEL
07 42 13 A2	SHINGLE STYLE METAL WALL PANEL - COLOR A
07 42 13 A4	VERTICAL METAL PANEL
07 42 13 A5	VERTICAL METAL PANEL - COLOR A
07 42 13 A6	VERTICAL METAL PANEL - COLOR B
07 42 13 B6	MANUFACTURER'S ALUMINUM TRIM
07 42 13 B7	MANUFACTURER'S SILL FLASHING
07 42 13 B8	MANUFACTURER'S TRANSITION FLASHING
07 42 13 D3	VERTICAL SUB-GIRT - 3/4\"
07 42 13 D4	HORIZONTAL SUB-GIRT - 3/4\"
07 46 46 A3	FIBER CEMENT PANEL & REVEAL SYSTEM - COLOR A
07 46 46 A4	FIBER CEMENT PANEL & REVEAL SYSTEM - COLOR B
07 46 46 B1	MANUFACTURER'S ALUMINUM TRIM
07 54 23 A2	FULLY ADHERED TPO ROOFING
07 54 23 B1	TAPERED ROOF INSULATION
07 62 00 D2	2\"
07 62 00 E1	EXTRUDED CORING
07 62 00 G3	MISCELLANEOUS FLASHING
07 81 16 A1	1 HOUR RATED SPRAY APPLIED CEMENTITIOUS FIREPROOFING ON BEAM PER UL D918
07 92 00 H3	SEALANT & BACKER ROD
08 41 13 B1	ALUMINUM STOREFRONT SYSTEM
08 41 13 B4	ALUMINUM BRACKET METAL TO MATCH STOREFRONT FRAME
08 41 13 D1	BREAK METAL ALUMINUM SILL W/ CLEAT
08 51 13 A2	SHIMS
09 21 16 A1	1 5/8\"
09 21 16 A4	3 5/8\"
09 21 16 A6	6\"
09 21 16 G2	RESILIENT FURRING CHANNEL
09 21 16 M1	GYPSUM BOARD
10 73 16 A1	PREMANUFACTURED METAL CANOPY
10 73 16 A2	CANOPY GUTTER

#	DATE	CHANGE DESCRIPTION
1	02/14/2020	ADDENDUM #1

NORTHERN KENTUCKY UNIVERSITY

NEW RESIDENCE HALL
KENTON DRIVE & CARROLL DRIVE
HIGHLAND HEIGHTS, KY 41099
FOR
NORTHERN KENTUCKY UNIVERSITY

MOODY-NOLAN

434 MADISON AVENUE
COVINGTON, KY 41011

PHONE: (859) 957-1277
FAX: (859) 957-1280

DRAWING TITLE:

EXTERIOR DETAILS

CURTIS J. MOODY
REGISTERED PROFESSIONAL ENGINEER
NO. 10967
STATE OF KENTUCKY
ARCHITECT

JANUARY 30, 2020

DRAWN BY: Author CHECKED BY: Checker

#18237

A523

BID & PERMIT SUBMITTAL